

EVO/IRC-Remote

The EVO/IRC-Remote is a battery powered handheld infrared transmitter that communicates with a variety of EVO/IRC controls and interfaces. The handheld may be ordered in several configurations.



Ordering:

EVO/IRC-Remote – *subscripts*

subscripts:

“P” adds an on/off button

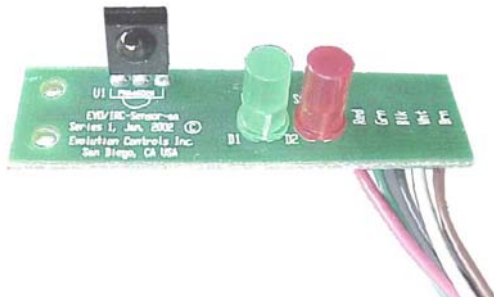
“N” adds a narrow beam

Example: EVO/IRC-Remote-NP orders a narrow beam remote with an On/Off button.

Other configurations available for OEM

Specifications

Power	2 “AA” Batteries
Divergence	20° Standard Beam 5° Narrow Beam
Size	<i>M</i> 127mm x 63mm x 25mm <i>L</i> 5.0” x 2.5” x 1.0”
Operating Environment	(<i>M</i> 18 °C to 55 °C) (<i>L</i> 0°F to 130 °F) 10-80% rh



EVO/IRC-Sensor

The IRC-Sensor allows an IR sensor, Signal Lamp, and optional Status Lamp to be mounted in a small space, remote from the IR interface or control board.



The sensor board features a small footprint, insulated face, and a variety of plug-in cable options.

Ordering:

EVO/IRC-Sensor - *subscripts*

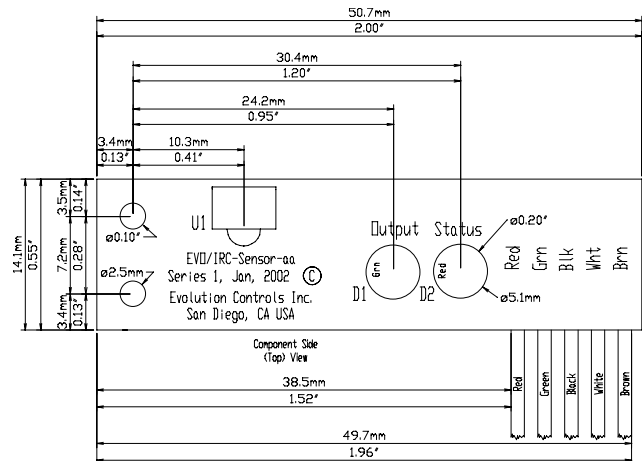
subscripts:

Add desired cable Length in inches.

“B” adds a bulkhead fitting.

“S” adds a Status Lamp

Other configurations available for OEM



Sensor can be mounted with two 4-40 self threading screws.

