

GE ECM Motor™ User Control Unit

Application

The ECM-User Control Unit allows a building occupant to adjust the output of General Electric's ECM Motor™. ECM motors are fractional horsepower fan motors featuring an internal microprocessor to provide exceptional efficiency, performance and motor life. The motor may be programmed for constant airflow or constant torque.

The ECM-UCU allows the user to adjust the output from 0% to 100% of the programmed control range when the motor is programmed for Vspd control.

The On/Off option turns the motor off when the control is rotated counterclockwise. A lamp on the control turns on with the motor, and increases in intensity as the output is increased. The motor may be programmed so an optional status lamp indicates over/under speed. This may be applied to indicate normal motor operation, or as a dirty filter indication.

Control circuits may interrupt power to the manual control unit to stop the ECM Motor™. Magnetic starters or power relays are not required!

The control may be mounted inside the HVAC equipment, or mounted remotely in an electrical junction (handy) box. A control shaft extends through the equipment panel or a wall plate where a knob is easily added.

Specifications

Power NEC Class II Only
24 Vac ± 20%, 50/60 Hz
2 W, 4 VA + 1VA/Motor
2 Motors Max. / Control

Outputs Go & Vspd
24 Vdc @ 20 mA

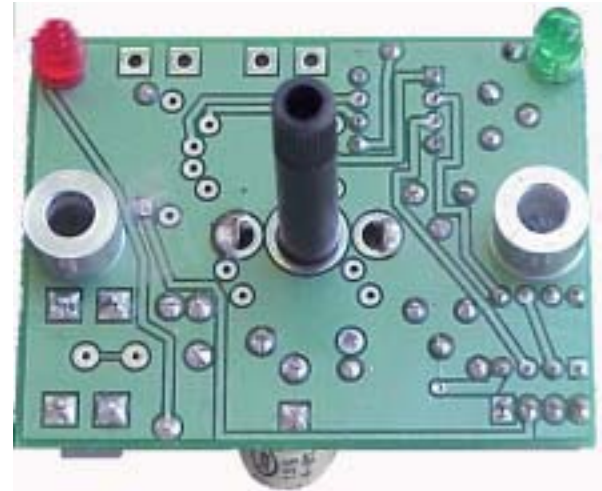
Signal Supports ECM Autoswitch Function

Thermal Stability >0.01%/°F
Operating Environment 0°F to 130° (-18°C to 55°C)
10-80% rh

Power Connections 1/4 Tabs

Control Rotation 270°

Shaft Diameter 0.25"



EVO/ECM-UCU-R-P-G-L

Operation

Turning the control knob clockwise increases the ECM motor output. Turning the control knob counterclockwise decreases the ECM motor output. P versions turn the motor off when rotated fully counterclockwise.

Ordering

ECM User Controller EVO/ECM-UCU-?-?-?

Use an "R" suffix for lamps and shaft extending from The bottom, or back of the controller

Use an "S" suffix for lamps and shaft extending from the top, or front of the controller

Use a "P" suffix for on/off control

Add a "G" suffix for the power lamp

Add an "L" suffix for the optional status lamp.

CMP Plenum Rated Cables

12" Pigtails ECM-CBL02 *cut For Remote Mounting*

Controller may be mounted up to 400' from the motor

4' ECM-CBL04	20' ECM-CBL20
8' ECM-CBL08	35' ECM-CBL35
12' ECM-CBL12	50' ECM-CBL50

